

Magnet Type Precision Square Level



- A powerful magnet is included in the perpendicular plane of the main body. And it is easy to measure of the vertical direction.

| Item Code | Size | Sensitivity (mm/1m) | Net Weight (kg) |
|-----------|------|---------------------|-----------------|
| R-MSL1502 | 150 | 0.02 | 3 |
| R-MSL1505 | | 0.05 | |
| R-MSL1510 | | 0.1 | |
| R-MSL2002 | 200 | 0.02 | 4.5 |
| R-MSL2005 | | 0.05 | |
| R-MSL2010 | | 0.1 | |
| R-MSL2502 | 250 | 0.02 | 5.5 |
| R-MSL2505 | | 0.05 | |
| R-MSL2510 | | 0.1 | |

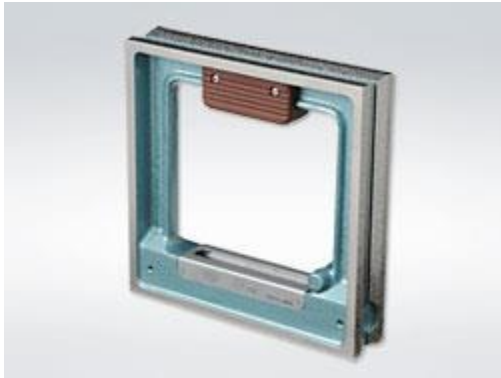
Precision Portable Flat Level A Class



- This precision level is manufactured according to JIS B 7510 A class. (There are bubble room in bubble pipe)
- It is very convenient for carrying and carrying around.

| Item Code | Material | Sensitivity (mm/1m) | Net Weight (kg) |
|-----------|-----------------|---------------------|-----------------|
| RKF-A1002 | Hard Steel Base | 0.02 | 0.8 |
| RKF-A1005 | | 0.05 | |

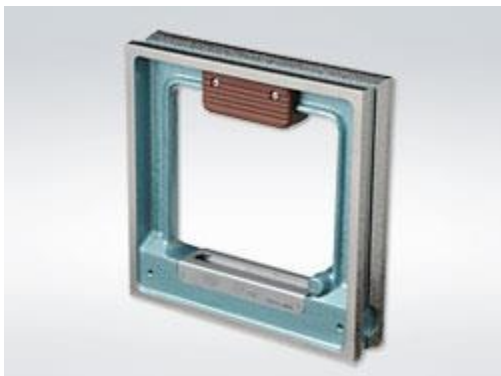
Precision Square Level A Class AA



- The accuracy of AA class is more than JIS B 7510 A-class.
(There are bubble room in bubble pipe)
- Please use this precision level for the measurement of squareness, flatness, inspection and assembly in high precision.

| Item Code | Size | Sensitivity (mm/1m) | Net Weight (kg) |
|------------|------|---------------------|-----------------|
| RSL-AA1502 | 150 | 0.02 | 3 |
| RSL-AA1505 | | 0.05 | |
| RSL-AA2002 | | 0.02 | |
| RSL-AA2005 | 200 | 0.05 | 4.5 |
| RSL-AA2010 | | 0.1 | |
| RSL-AA2502 | | 0.02 | |
| RSL-AA2505 | 250 | 0.05 | 7.5 |
| RSL-AA2510 | | 0.1 | |
| RSL-AA3002 | | 0.02 | |
| RSL-AA3005 | 300 | 0.05 | 10.5 |
| RSL-AA3010 | | 0.1 | |

Precision Square Level A Class



- This precision level is manufactured according to JIS B 7510 A class. (There are bubble room in bubble pipe)

| Item Code | Size | Sensitivity (mm/1m) | Net Weight (kg) |
|-----------|------|---------------------|-----------------|
|-----------|------|---------------------|-----------------|

| | | | |
|-----------|-----|------|------|
| RSL-A1502 | 150 | 0.02 | 3 |
| RSL-A1505 | | 0.05 | |
| RSL-A1510 | | 0.1 | |
| RSL-A2002 | 200 | 0.02 | 4.5 |
| RSL-A2005 | | 0.05 | |
| RSL-A2010 | | 0.1 | |
| RSL-A2502 | 250 | 0.02 | 7.5 |
| RSL-A2505 | | 0.05 | |
| RSL-A2510 | | 0.1 | |
| RSL-A3002 | 300 | 0.02 | 10.5 |
| RSL-A3005 | | 0.05 | |
| RSL-A3010 | | 0.1 | |

Precision Flat Level A Class AA



- The accuracy of this AA class is more than JIS B 7510 A-class. (There are bubble room in bubble pipe)
- Please use this precision level for the measurement of squareness, flatness, inspection and assembly in high precision.

| Item Code | Size | Sensitivity (mm/1m) | Net Weight (kg) |
|------------|------|---------------------|-----------------|
| RFL-AA1502 | 150 | 0.02 | 1.6 |
| RFL-AA1505 | | 0.05 | |
| RFL-AA2002 | | 0.02 | |
| RFL-AA2005 | 200 | 0.05 | 2.3 |
| RFL-AA2010 | | 0.1 | |
| RFL-AA2502 | | 0.02 | |
| RFL-AA2505 | 250 | 0.05 | 3 |
| RFL-AA2510 | | 0.1 | |
| RFL-AA3002 | | 0.02 | |
| RFL-AA3005 | 300 | 0.05 | 3.7 |
| RFL-AA3010 | | 0.1 | |

Precision Flat Level A Class



- This precision level is manufactured according to JIS B 7510 A class. (There are bubble room in bubble pipe)

| Item Code | Size | Sensitivity (mm/1m) | Net Weight (kg) |
|-----------|------|---------------------|-----------------|
| RFL-A1502 | 150 | 0.02 | 1.6 |
| RFL-A1505 | | 0.05 | |
| RFL-A1510 | | 0.1 | |
| RFL-A2002 | 200 | 0.02 | 2.3 |
| RFL-A2005 | | 0.05 | |
| RFL-A2010 | | 0.1 | |
| RFL-A2502 | 250 | 0.02 | 3 |
| RFL-A2505 | | 0.05 | |
| RFL-A2510 | | 0.1 | |
| RFL-A3002 | 300 | 0.02 | 3.7 |
| RFL-A3005 | | 0.05 | |
| RFL-A3010 | | 0.1 | |

Precision Square Level



- This precision level is manufactured according to our RIKEN's standard. (There are no bubble room)
- Please use this precision level for machine assembly, machine installation and centering.

| Item Code | Size | Sensitivity (mm/1m) | Net Weight (kg) |
|-----------|------|---------------------|-----------------|
| RSL-1002 | 100 | 0.02 | 2 |
| RSL-1005 | | 0.05 | |
| RSL-1010 | | 0.1 | |
| RSL-1502 | 150 | 0.02 | 2.6 |
| RSL-1505 | | 0.05 | |
| RSL-1510 | | 0.1 | |
| RSL-2002 | 200 | 0.02 | 4 |
| RSL-2005 | | 0.05 | |
| RSL-2010 | | 0.1 | |
| RSL-2502 | 250 | 0.02 | 7 |
| RSL-2505 | | 0.05 | |
| RSL-2510 | | 0.1 | |
| RSL-3002 | 300 | 0.02 | 9.3 |
| RSL-3005 | | 0.05 | |
| RSL-3010 | | 0.1 | |

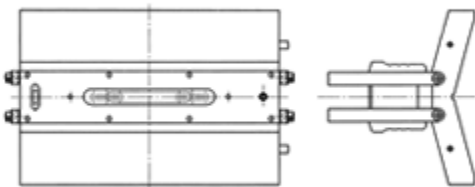
Precision Flat Level



- This precision level is manufactured according to our RIKEN's standard. (There are no bubble room)
- Please use this precision level for machine assembly, machine installation and centering.

| Item Code | Size | Sensitivity (mm/1m) | Net Weight (kg) |
|-----------|------|---------------------|-----------------|
| RFL-1002 | 100 | 0.02 | 0.8 |
| RFL-1005 | | 0.05 | |
| RFL-1010 | | 0.1 | |
| RFL-1502 | 150 | 0.02 | 1.8 |
| RFL-1505 | | 0.05 | |
| RFL-1510 | | 0.1 | |
| RFL-2002 | 200 | 0.02 | 2.3 |
| RFL-2005 | | 0.05 | |
| RFL-2010 | | 0.1 | |
| RFL-2502 | 250 | 0.02 | 2.9 |
| RFL-2505 | | 0.05 | |
| RFL-2510 | | 0.1 | |
| RFL-3002 | 300 | 0.02 | 3.5 |
| RFL-3005 | | 0.05 | |
| RFL-3010 | | 0.1 | |

Saddle Type Precision Level



- This level can be measured the straightness of big diameter's workpiece such a roll and pipe.

Round Level



● Measurement of the flatness of all directions can be performed easily.

| Item Code | Type | Outside Dia x Brim Dia x Height (mm) | Net Weight (g) |
|-----------|--------------|--------------------------------------|----------------|
| RRL1828 | with brim | ø18xø28x14 | 28 |
| RRL2030 | | ø20xø30x15 | 37 |
| RRL2435 | | ø24xø35x18 | 60 |
| RRL2538 | | ø25xø38x18 | 72 |
| RRL2020 | without brim | ø20x20 | 30 |
| RRL2420 | | ø24x20 | 39 |